

a journey to
sustainable development
& regional revitalization

地可
方持
創續
生發
之展
旅與



Lessons from Tokushima

德島示例

Zero Waste / Creative Village / Dual Mode Vehicle

零廢棄 / 創意鄉村 / 雙模式車輛

2026.06.21 - 2026.06.29 Basic Plan 基礎套餐 JPY212000

Zero Waste

Kamikatsu Town | 上胜町



Creative Village

Kamiyama Town | 神山町



Dual Mode Vehicle

Asa Coast Railway | 阿佐海岸铁道





Zero Waste

零废弃

Japan's First Zero Waste Village

Nestled in the mountains of Shikoku, Kamikatsu stands as Japan's first zero-waste village. For over twenty years, the residents of this least populated municipality on the island of Shikoku have meticulously separated their trash into 45 different recycling categories — a calm yet revolutionary practice that has turned the town into a global emblem of sustainability and a model of community-driven environmental action. In Kamikatsu, zero waste goes far beyond sorting materials; it's a philosophy that honours resources, strengthens social bonds, and shapes everyday life.

日本首个零废弃村庄

坐落在四国群山之中的上胜町，是日本首个零废弃村庄。二十多年来，这个位于四国岛、人口最少的自治体，居民们始终如一地将垃圾细致分类为45种可回收类别——这种安静却具有革命性的做法，使小镇成为全球可持续发展的象征，以及社区推动环境行动的典范。在上胜町，“零废弃”远不止于分类，它是一种尊重资源、强化社区纽带、并塑造日常生活的生活哲学。



A model for regional revitalization

Kamiyama is a rural town in Tokushima that has become a standout example of regional revitalization by embracing creativity and openness rather than trying to restore old industries. The town attracted artists, entrepreneurs, students, and remote workers through programs like artist residencies, high-speed internet infrastructure, opening new college, and the renovation of vacant houses into studios, offices, and cafés. Local residents and NPOs led many of the initiatives, ensuring development stayed community-driven. As a result, Kamiyama transformed into a small but vibrant hub of culture, innovation, education, and sustainable rural living.



地方创生的典范

神山町位于德岛，是一个通过拥抱创造力与开放性而非复兴旧产业，成功实现区域振兴的典型乡镇。通过艺术家驻留项目、高速网络基础设施、设立新学院，以及将空置房屋改造为工作室、办公室和咖啡馆等举措，神山吸引了艺术家、创业者、学生与远程工作者的到来。当地居民与非营利组织在众多项目中发挥主导作用，使发展始终保持以社区为核心。由此，神山逐渐转变为一个在文化、创新、教育与可持续乡村生活方面都充满活力的小型聚落。



World's First Train-Bus Hybrid

Asa Coast Railway's Dual Mode Vehicle is a pioneering mobility solution blending bus and train capabilities into a single vehicle. They were developed to revitalize rural transportation in Tokushima and Kochi, offering a flexible, low-cost mobility solution that preserves rail connectivity while expanding reach into communities beyond the tracks. It preserves essential transport links in rural Japan while offering a memorable travel experience along the Pacific coast. Its success has sparked national interest in whether DMVs could support other regional railways facing similar challenges.

世界首个火车-巴士结合体

阿佐海岸铁道的双模式车辆（DMV）是一项开创性的交通创新，将巴士与列车的功能融合于同一台车上。这项技术的诞生旨在振兴德岛与高知地区的乡村交通，提供一种灵活且低成本的运输方式，不仅维持既有铁路的连结，也能将服务延伸至铁道无法覆盖的社区。DMV 在保留日本乡村重要交通命脉的同时，也为旅客带来沿著太平洋海岸的难忘旅程。其成功引发全国关注，许多地方铁路也开始思考，这种模式是否能成为解决地方交通困境的新方向。

Dual Mode Vehicle

双模式 车辆



Kamikatsu | 上胜町

Kamiyama | 神山町

Asa Coast Railway | 阿佐海岸铁道





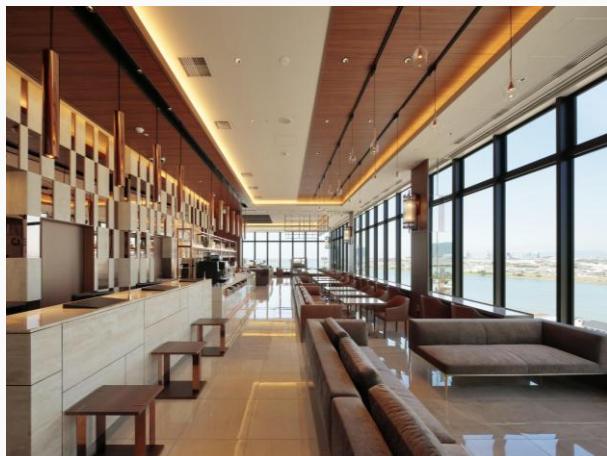


Accommodation

住宿

Night 1

Candeo Hotels Nankai Wakayama or equivalent



第一晚

南海和歌山Candeo酒店或相同



Night 2~4

Ichi The Hostel Hiwasa or equivalent



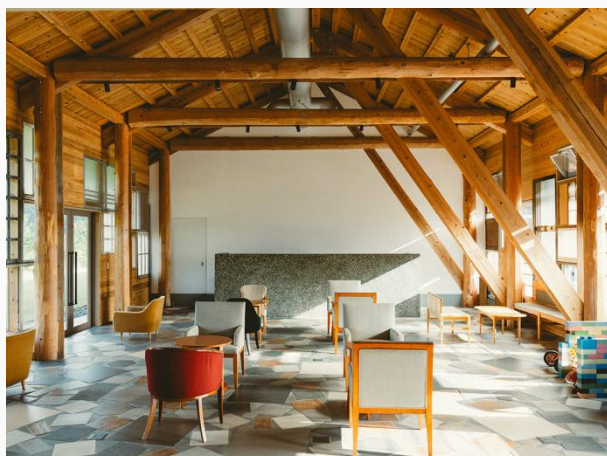
第二、三、四晚

日和佐Ichi The Hostel或相同



Night 5

Kamikatsu Hotel WHY



第五晚

上胜町WHY酒店



Accommodation

住宿

Night 6

WEEK Kamiyama



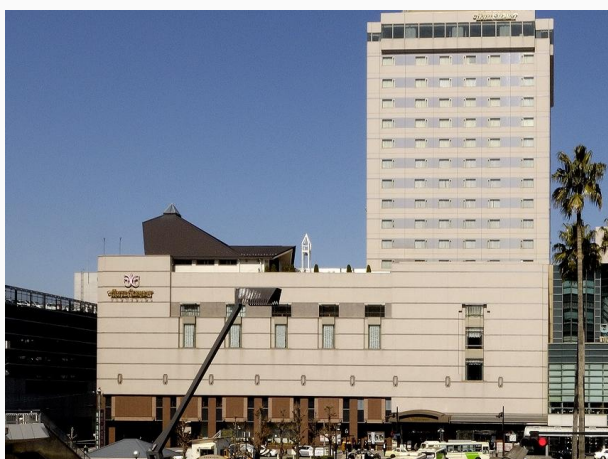
第六晚

WEEK 神山



Night 7

JR Hotel Clements Tokushima or equivalent



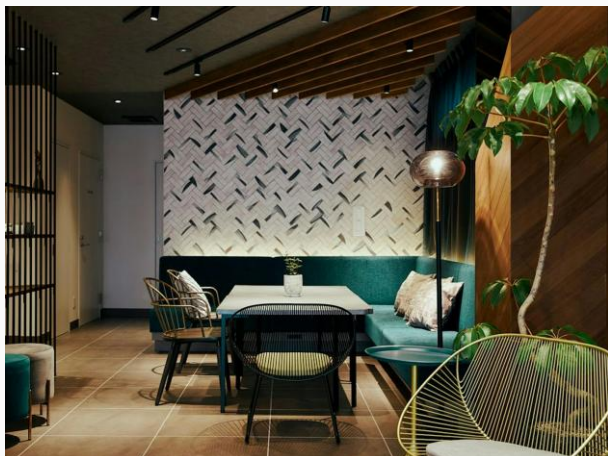
第七晚

德岛JR Clements酒店或相同



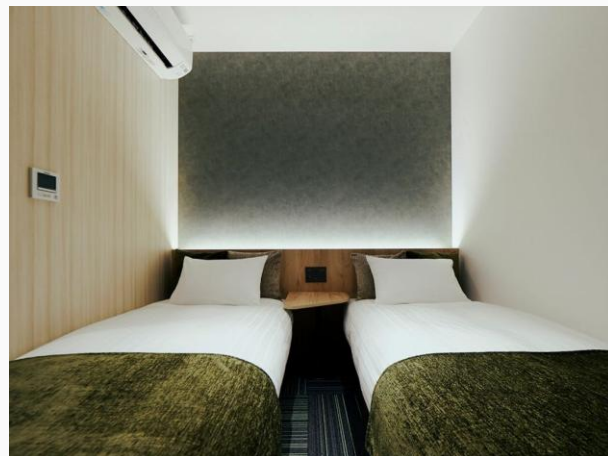
Night 8

R Hotel Kansai Airport or equivalent



第八晚

关西机场R酒店或相同



Itinerary

精简行程

1

Assemble at Kansai International Airport / Nankai Wakayamashi Station / Wakayama Civic Library
关西国际机场集合 / 南海和歌山市车站 / 和歌山市民图书馆

2

Wakayama City Walk (Optional) /
Ferry to Tokushima
和歌山City Walk (可选) / 乘坐渡轮前往德岛

3

Dual Mode Vehicle inspection tour
双模式车辆考察

4

Naka Town Toy Museum
那贺町大山的玩具美术馆

5

Travel to Kamikatsu /
Kamikatsu Zero Waste inspection tour
前往上胜町 / 上胜町零废弃考察

6

Kamikatsu waste-separation experience /
Travel to Kamiyama
上胜町垃圾分类体验 / 前往神山町

7

Inspection tour at Kamiyama: perspectives from the
administration/ Kamiyama Marugoto College of
Design, Engineering and Entrepreneurship
inspection tour and exchange session / Travel to
Tokushima
神山町考察/ 神山设计工程与创业学院考察与交流 / 前往德岛

8

Awa Odori Kaikan Museum / Bizan Ropeway /
Ferry to Wakayama
阿波舞会馆 / 眉山索道 / 乘坐渡轮返回和歌山

9

Dismiss at Kansai International Airport
关西国际机场解散

Price

费用

all-in plan

RM 6800+

– departing from Kuala Lumpur

SGD 2320

– departing from Singapore

CNY 12000

– departing from Shanghai

basic plan

(excluding flight tickets)

JPY 212000 / RM 5499 /

CNY 9700 / SGD 1770

全包套餐

RM 6800+ – 吉隆坡出发

SGD 2320 – 新加坡出发

CNY 12000 – 上海出发

基础套餐 (不含机票)

JPY 212000 / RM 5499 /

CNY 9700 / SGD 1770

Terms

条件

application closes 15th May 2026

price includes round-trip flight tickets (with at least 20kg luggage) / transportation / accommodation / necessary entrance tickets / partial meals / lecture and study tour fee / guide and translations

price excludes transportation before and after the tour / partial meals / personal consumptions (laundry, communications, beverage, room services or other purely personal natures and optional tours, etc.)

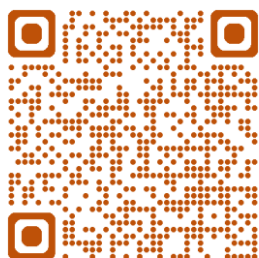
报名截止日期 2026年5月15日

费用包含 往返飞机票(含至少二十公斤托运行李) · 全程交通与住宿 · 景点的首道门票 · 部分膳食 · 讲座与视察费 · 向导与翻译

费用不包含 集合前与解散后的交通费用 · 部分膳食 · 个人消费(如洗衣、电话、行程外饮食, 行程外交通, 个人保险费用等)

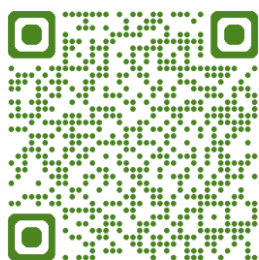


Learn more



更多详情

Apply here



在此报名

Instagram



thejourneysbythespace